



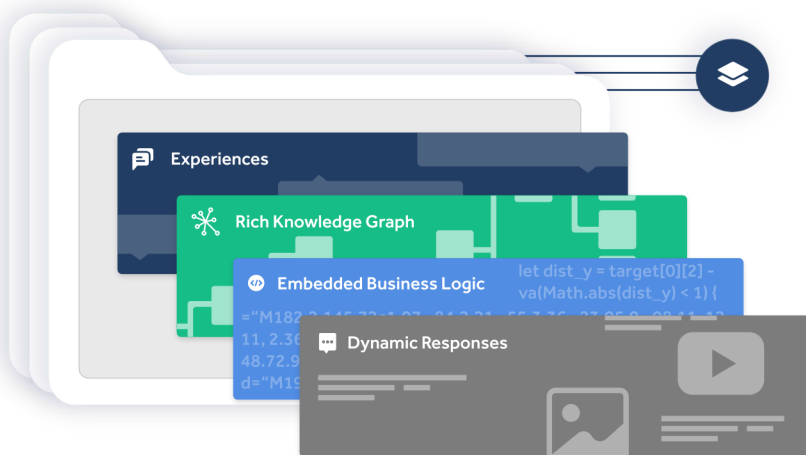
interface that is intelligent

Leapfrog your customer and employee experience with our industry leading Intelligent Virtual Assistant.

[Request demo](#)

Industry-first integrated dynamic model-driven platform

We combine language, knowledge graph, business logic, and response models that help enterprises to create and maintain richer Intelligent Virtual Assistant or IVA in no time.



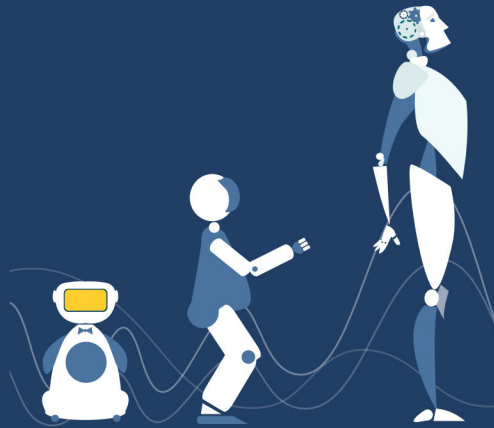
Selective override

Choose models from preloaded packages to create rich experiences faster.

Richer for user & Faster for enterprise

Our industry-first approach powers IVA for human-like rich conversations to users deployed quickly by any enterprise.

Human-like rich conversation for users



Automated Multi-turn Conversations



Semantic Language Understanding



Rich Domain Understanding



Dynamic Input Management



Sophisticated Workflow Chaining

Faster setup & maintenance for enterprise

interface

Upto 2.3x faster

Dialogflow by Google

* time measured from inception to go live



Language Training & Management



Response Creation & Management



Domain Knowledge Training & Management



Context Setup & Management



Business Logic Setup & Management

[Learn more](#) →

Our experts have built solutions to your problems proactively

Realize the true value of AI. By offering out-of-the-box solutions for industries, along with fully-managed services, interface continues to improve IVA across all platforms.



interface for industries

Specific solutions that cater to niche and common industry challenges.



interface for functions

Solutions built with expert domain level knowledge for an array of functions.

Choose industries →

Choose functions →

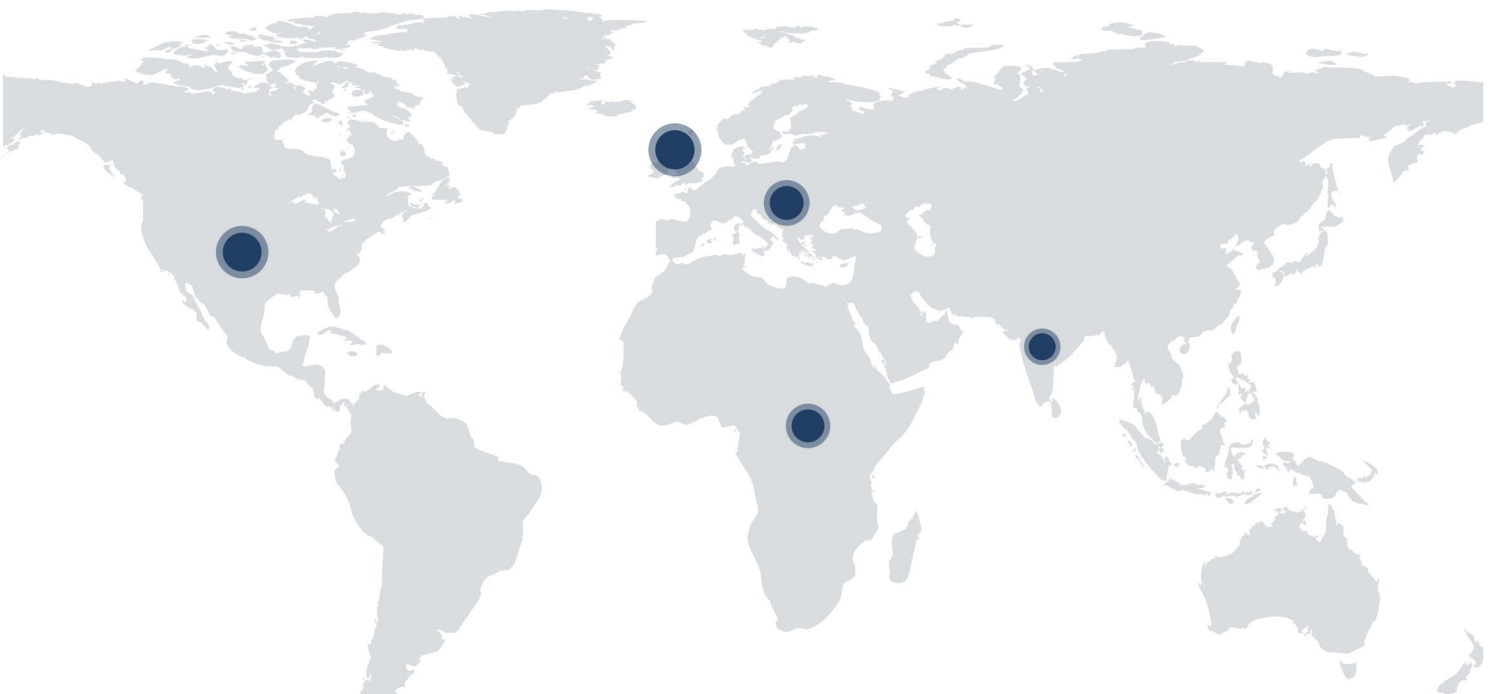
Omnichannel
& multi-lingual
ready for global
enterprise

Support over
100+
languages and
integrations
to any digital
channels from
Contact
Center to
Hologram.

[Learn more →](#)

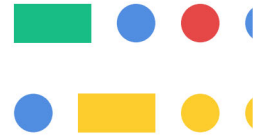
We are the interface to Fortune 500 enterprises of the world

Proven platform with one of the world's largest AI deployments to support over 10,000 conversations in a second. We power global clients with multiple delivery centres across the world.









Every interface can



.

 	PRODUCT	RESOURCES	ABOUT	   
	Platform	Blog	Careers	
	Functions	Success stories	Be a partner	Subscribe to newsletter
	Industries	Newsroom	Data compliance	<input type="text" value="Enter email"/>
	Request demo	Infographics		<input type="submit" value="Submit"/>