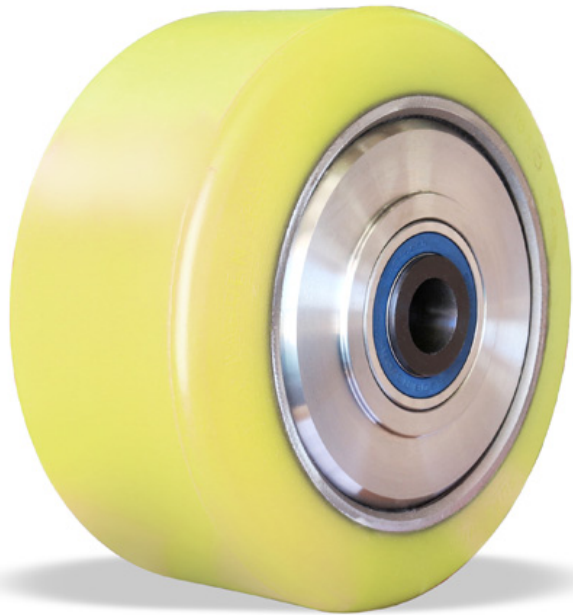


Series POYB-ULTRA

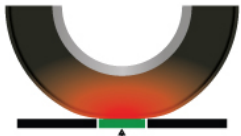
Renegade™ Ultra Press-on Wheels

Capacity Range: 1,800 – 15,300 lbs.

The new Renegade Ultra Press-On Wheels are Hamilton's answer to applications running up to 10 mph continuously (24/7) and carrying heavy loads up to 13,000 lbs. Two primary design features provide the continuous duty rating: 1) the face or running surface of the Renegade Ultra tire is CNC-machined with only 0.015" total run-out providing our smoothest riding press-on and prolonged wheel work-life and 2) the Renegade Ultra compound is formulated similar to our DuraGlide Wheels (add link) and represents our coolest running press-on wheel. The Renegade Ultra is also your best choice of a polyurethane press-on wheel for outdoor applications.

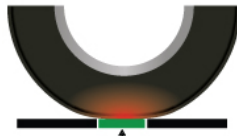


- More energy lost to roll the tire
- Higher internal temperature



Common heavy load compound

- Less energy lost to roll the tire
- Lower internal temperature



Renegade Ultra poly compound

Same Contact Area

To support the high speeds and provide greater rollability, engineers equipped the new Renegade wheels with massive double-stacked maintenance-free precision ball bearings. Also, the extra-thick, extra-wide solid tires feature a bond to the rim that is guaranteed to never fail. The replaceable tire & steel rim are "pressed on" to a heavy duty 1045 steel core cnc-machined to tight tolerances. Standard tread color is yellow but can be optionally ordered in black. Renegade Wheels are offered below in a variety of popular sizes. Additional non-stock

sizes are available, consult factory.

For casters mounted with our new Renegade Wheels, please see our new Spinfinity XC Caster Series. For general purpose press-on applications, we recommend our Renegade Standard Wheels. For applications with extra tough terrain such as gravel or rough surfaces (eg. mining industry), we recommend our new Renegade MAX Wheels.

Click on bearing size (far right column) to see full wheel's specs.

Precision Ball Bearings

Nominal Diameter	Face	Rim Diameter	Hub Length	Load Capacity (lbs.) @ 3 MPH	Load Capacity (lbs.) @ 6 MPH	Load Capacity (lbs.) @ 10 MPH	Weight (lbs.)	Base Number	Precision Ball Bearing Sizes
9	5	5	5 1 ³ / ₂₅	4200	3500	3100	29	W-95- POYB- ULTRA-	1 1/4
10	5	6 1/2	5 1 ³ / ₂₅	4400	3700	1800	50	W-105- POYB- ULTRA-	1 1/4
12	5 1/2	8	6 1/2	5900	4900	4300	71	W-1255- POYB- ULTRA-	1 1/4
13	5 1/2	8	6 1/2	6400	5400	4800	86	W-1355- POYB- ULTRA-	1 1/2 2
15	9	11 1/4	10	12200	10200	9000	295	W-1590- POYB- ULTRA-	1 1/2 2

Nominal Diameter	Face	Rim Diameter	Hub Length	Load Capacity (lbs.) @ 3 MPH	Load Capacity (lbs.) @ 6 MPH	Load Capacity (lbs.) @ 10 MPH	Weight (lbs.)	Base Number	Precision Ball Bearing Sizes
16	5	11 1/4	6	8700	7300	6300	167	W-1650- POYB- ULTRA-	1 1/2 2
16	7	11 1/4	8	6600	5500	4200	215	W-1670- POYB- ULTRA-	1 1/2 2
18	7	11 1/4	8	11300	9400	8300	284	W-1870- POYB- ULTRA-	1 1/2
18	9	12 1/8	10	15300	12800	11400	354	W-1890- POYB- ULTRA-	1 1/2

