



Home » Meet the PSC Software Family of Products » ACE



A Highly-Configurable Enterprise Quality Management System



Adaptive Compliance Engine™ (ACE) allows companies like yours to adapt and grow to meet your evolving quality management needs, without coding. With ACE, you will minimize the administrative hassles and maximize ROI with productivity gains from day one - all while 21 CFR Part 11 compliant.

Speak With Us

ACE Capabilities

ACE is a scalable and highly-configurable enterprise quality management system that can adapt to any business process to enable the tracking, management, and reporting of all compliance, quality, and operational activities in real time. ACE combines a wide range of regulatory compliance tasks into a comprehensive and seamless platform, eliminating the cost of managing disconnected and isolated applications. ACE's capabilities include ACE Auditor™, ACE Analytics™, ACE Inspection™, ACE Docs™, ACE LMS, and ACE PLM.



ACE Docs™ brings your full document life-cycle into a secure environment to ensure quality and confidentiality within your company. Within the system you can, maintain document revisions, limit access based on permissions and electronically sign documents prior to release. Learn more [here](#).

ACE Analytics™ allows you to share print-ready and interactive reports and dashboards with countless users. Whether you are a manager wanting to view more details in a report or an analyst who needs to visualize data, ACE Analytics™ has you covered. Learn more [here](#).

ACE Inspection™ allows companies to streamline regulatory inspections by tracking all requests and logging notes in a single platform. Real-time updates and in-system notifications ensures that your team is responding to requests in an efficient manner. Learn more [here](#).



ACE Auditor™ provides the flexibility to schedule, plan, and execute various types of audits all within a single, comprehensive platform. ACE Auditor™ provides the ability to manage your entire audit life-cycle. Learn more [here](#).



With ACE LMS, your company's employees are able to train on processes, take quizzes, upload files, and sign off on these educational courses all in one place. Keep up to date on training and have trainers review answers for completed assignments.



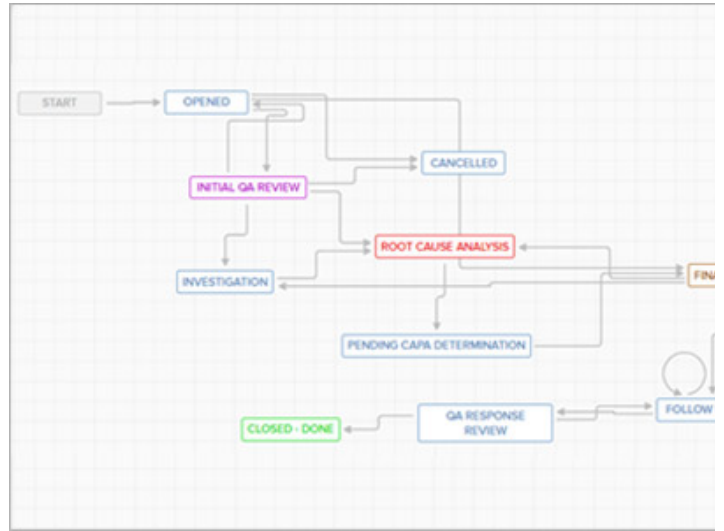
ACE PLM is our product life-cycle management capability. ACE PLM allows users to create a bill of materials and build products through a user-friendly platform. Need to update a component? ACE PLM can seamlessly apply the change to all products, or simply swap out for just one product.

[Learn More](#)

Configurable Workflows

Make Workflows That Fit Your Business. Never Fall Behind.

ACE provides a single-platform workflow management system that automates approval-based processes across systems and departments. ACE allows for the generation of workspaces, workflows, and reports, all while maintaining efficiency through customizable filters for effective record searching. Ensure the quality of your company and processes while simplifying the workload with ACE.



View User Project Roles			
Project	Role A	Role B	Role C
Audit	✓	✗	✗
Document	✓	✗	✗
Inspection	✓	✓	✓
Audit Report	✓	✗	✗
Complaints	✓	✗	✗
Deviations	✓	✗	✓

Permission-Based Security

Site, Process, and Role-Based Security.


With ACE you can set roles and responsibilities within your organization. Set permissions and workflow requirements to ensure that the appropriate person sees and approves all operations. Schedule tasks for select individuals or send them notifications, either through email or the in-system notification, with ACE. Never worry about skipped approvals or security oversights.

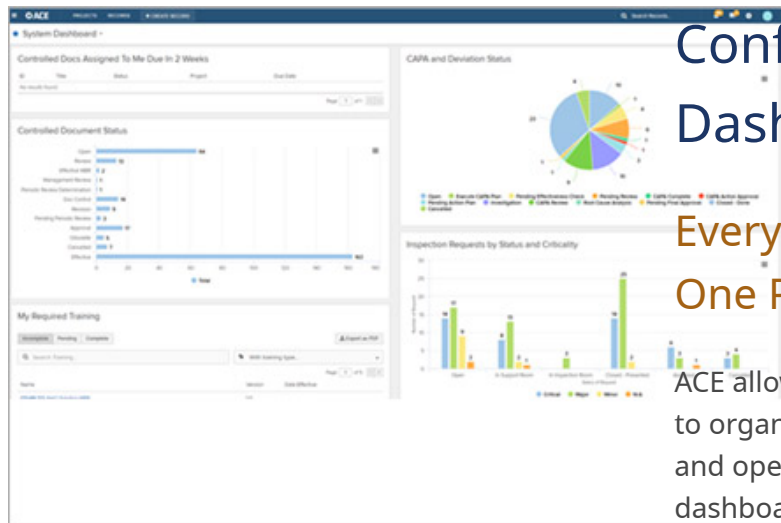
Meet Regulatory Requirements

Electronic Signature & Audit Trail.

Collect and store electronic signatures for records or documents being routed through the configurable workflow system. View and print reports on record-level audit trail information. ACE is compliant with a wide variety of regulatory requirements and industry standards such as 21 CFR Part 11 and ISO regulations.

Record Signature Details

User	Role	Decis
 Thomas Tschirhart	Document Reviewers	Acce



Configurable, Seamless Dashboards

Everything You Need, All In One Place.

ACE allows you to create custom dashboards to organize, maintain, and track all current and open projects and reports. The dashboard allows you to maintain efficiency through configurable filters with real-time updates; this allows for seamless understanding within your organization while eliminating human communication errors or missed important deadlines.

Ready to Engage?

Let's Discuss How PSC Software Can Help.

Contact Us



Contact Us

700 Corporate Center Dr
Pomona, CA 91768
Phone: +1 (909) 784-3354
Fax: +1 (909) 784-3354
Email:
support@pscsoftware.com

Explore

[About Us](#)
[Products](#)
[Contact Us](#)

Legal

[Terms of Service](#)
[Privacy Policy](#)
[Sitemap](#)

© 2019 PSC Software™. all rights reserved.