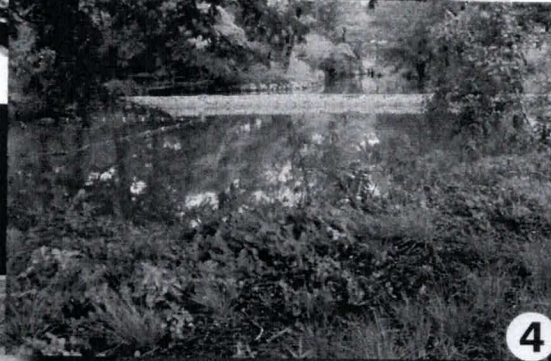
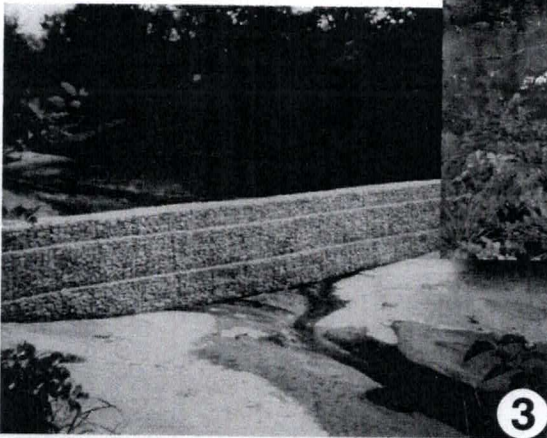




Photos 1 & 2: These top photos show the existing retention pond before the project. Note the several feet of sediment in photo 1.



Photos 3 & 4: The pond bisected with a gabion wall to filter sediment before it reached the outlet and to divert excess water to the new retention pond along the river bank.



Photo 5: The outfall from the park retention pond (shown above) into the new retention pond on the river banks.



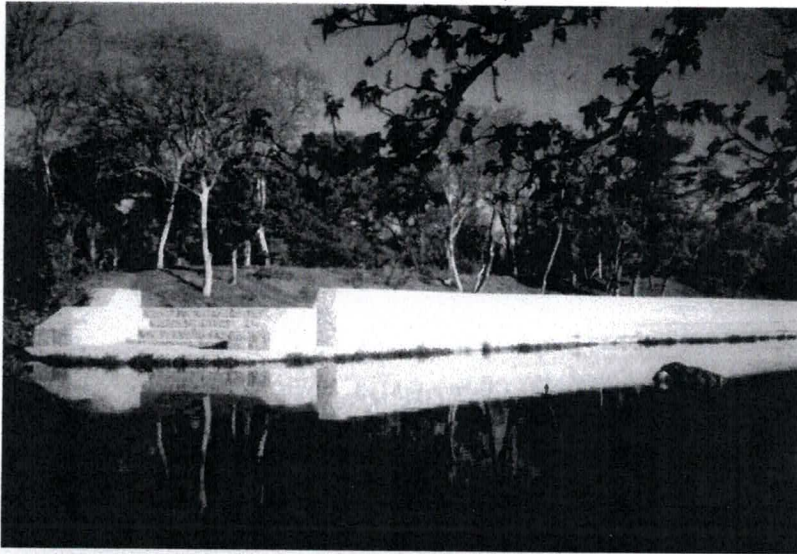
Photos 6 & 7: Debris collected behind the gabion wall in the new dry pond. A drop structure ensures that the velocity of any overflow is checked. Note the chemical sheen evident on the water in photo 7.



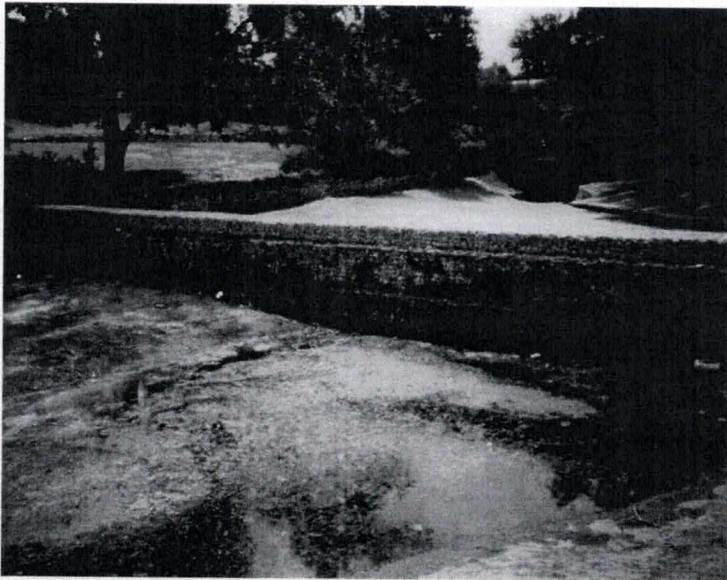




# MODULAR GABION SYSTEMS



A new retention pond on the banks of the Concho River is formed behind this Modular Gabion Systems gabion wall.



An existing stormwater/urban runoff retention pond is bisected by a gabion wall to reduce sediment collection at the outlet and divert water into the new retention basin on the river bank.

Location: ..... Concho River, San Angelo, Texas  
Contractor: ..... Regency Construction  
Engineer: ..... SK Engineering  
Specifier(s): ..... City of San Angelo  
..... Upper Colorado River Authority  
Project Date: ..... 1999

*Project Notes:*

This project addressed poor water quality in the north fork of the Concho River, a tributary of the Colorado River, downstream from the O. C. Fisher Reservoir. Construction of this reservoir in 1952 reduced scouring flows and virtually eliminated flooding along the Concho, however since the 1970s the river has been burdened with urban runoff and non-point source pollution causing fish-kills and foul odor.

The Concho River project consists of two gabion structures constructed at a primary watershed. The secondary structure is a gabion wall which bisects an existing retention pond in a downtown San Angelo park. This 1/2 acre retention basin, which probably dates to the 1930s, had been known to collect 2-4 feet of sediment annually. This sludge diminished the treatment effectiveness of the pond and, when discharged under heavy water flows, it threatened water quality in the river. Construction of the gabion wall created a filter to remove much of the sediment before it reached it the outlet of the pond and allowed some of the water to be diverted to the second pond created behind the primary gabion structure built directly on the river bank to maintain normal water levels in the pond.

The primary BMP structure is a gabion wall and drop structure constructed immediately along the river, creating a new retention pond along the banks. Water is discharged into this pond from the retention basin in the park and seeps through the wall into the river. The gabion wall traps sediment and "floatables" before they can reach the Concho and the debris is removed by city crews.

*Reference: North Concho River, Urban Runoff/Non-Point Source Abatement Master Plan and Demonstration Project Final Report. Contract Number 52000000021. Prepared by the UCRA, November 1999.*

North Concho River  
URBAN RUNOFF/Non-POINT SOURCE  
ABATEMENT MASTER PLAN AND DEMONSTRATION PROJECT

*Final Report*

CONTRACT NO. 52000000021

Prepared by the  
UPPER COLORADO RIVER AUTHORITY  
NOVEMBER 1999



PREPARED IN COOPERATION WITH THE  
TEXAS NATURAL RESOURCES CONSERVATION COMMISSION AND THE U.S. ENVIRONMENTAL PROTECTION AGENCY  
The Preparation of this report was financed in part through grants from the State of Texas  
through the Texas Natural Resources Conservation Commission  
and the U.S. Environmental Protection Agency



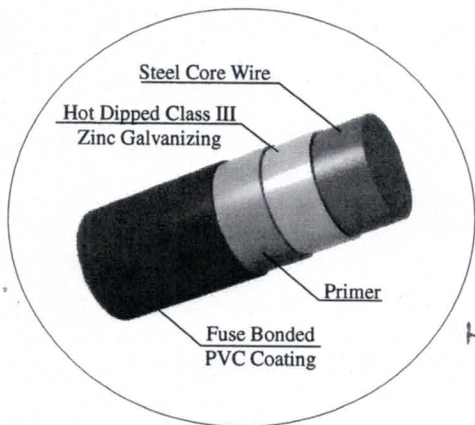
## MODULAR GABION SYSTEMS

2221 Canada Dry Street, Houston, Texas 77023 USA  
800.324.8282 • 713.924.4371 • 713.924.4381 fax  
www.gabions.net • wire@gabions.net

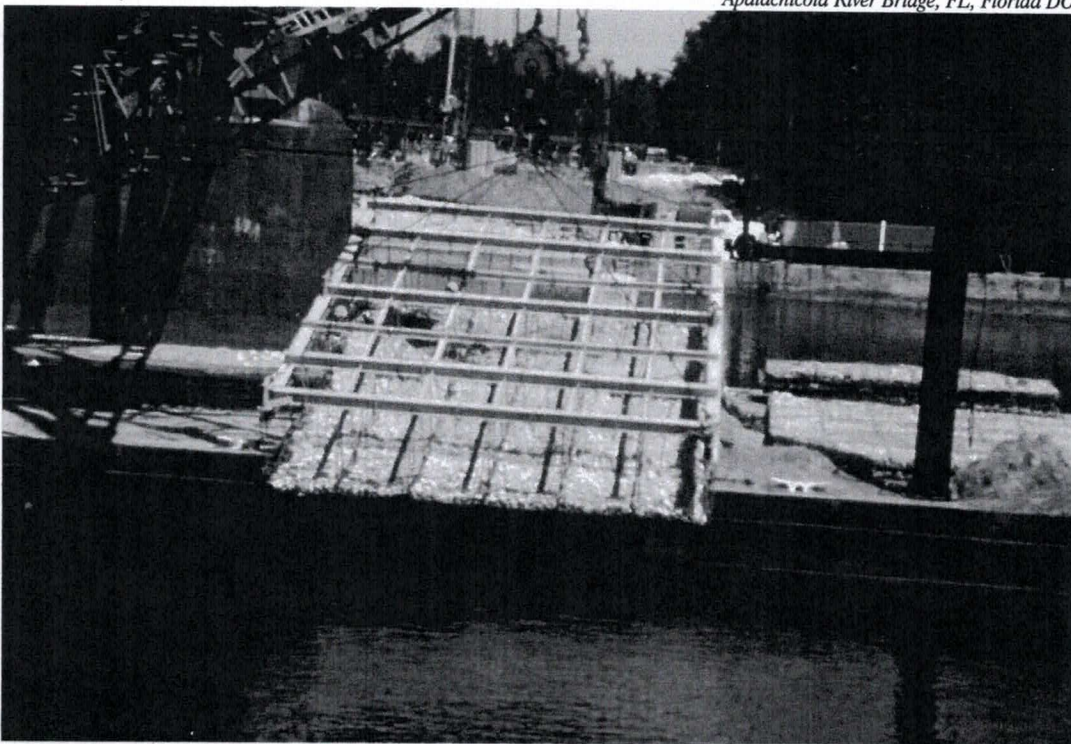
*Erosion Control Specialists*



# Revolutionary for...



- *Incomparable Assembly Speed & Efficiency* - thanks to our unique spiral binder and dimensionally stable welded wire which all but eliminate tedious hand lacing.
- *Unsurpassed Corrosion Resistance & Durability* - C. E. Shepherd invented the fluidized bed wire mesh powder coating technology and has perfected it over more than 30 years!
- *Unparalleled Technical Support & Customer Service* - decades of experience in gabion design and installation worldwide allow us to offer consulting and liaison services.
- *Extraordinary Product Versatility & Value* - this superior product can be field modified without loss of mesh integrity and assembled without redundant panels.



*Apalachicola River Bridge, FL, Florida DOT*

*Distributed by:*

## **Modular Gabion Systems**

*A Division of C. E. Shepherd Company, L.P.*

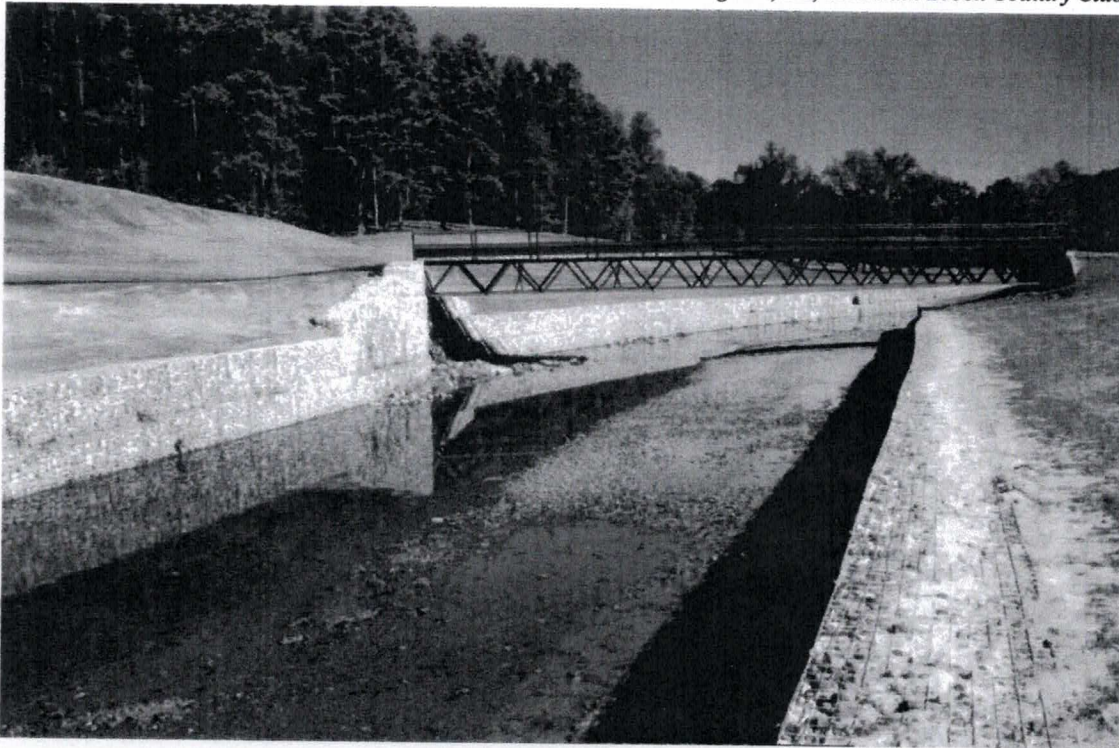
2221 Canada Dry Street, Houston, TX 77023 USA  
800.324.8282 • 713.924.4371 • 713.924.4381 FAX  
www.gabions.net • wire@gabions.net



C. E. Shepherd Company, manufacturer of high quality, corrosion resistant wire mesh products since the 1960's, invites you to join our...

# Rock & Roll Revolution

*Birmingham, AL, Mountain Brook Country Club*



Modular Gabion & Gabion Mattresses conform to ASTM A974-97 and are ideal for:

- Bank & Channel Protection
- Retaining Walls
- Culvert Outlets
- Weirs & Drop Structures
- Groins & Jetties
- Shore Defense

Modular Gabion & Gabion Mattresses approved by these agencies:

- US Army Corps of Engineers
- USDA Natural Resources Conservation Commission
- US DOT Federal Highway Administration
- Federal Aviation Administration
- US Department of the Interior





PO BOX 9445  
HOUSTON TX 77261-9445  
800/324-8282

George Ragazzo, G. M.  
Mobile AL Office  
Colin Frazier  
Houston TX Office

334/380-0332 phone  
334/380-0746 fax  
713/928-3763 phone  
713/924-4381 fax

DATE: 6/12/97	NO. OF PAGES:
TO: MEDHAT F. RIAD	QUOTATION NO.:
COMPANY: SODECO SPECIALTIES	PROJECT:EXPORT
FAX NO.: 02024174120	PROJECT LOCATION:
PHONE NO.: 02024172843	OWNER:
TERMS:	BID DATE:

MODULAR GABION SYSTEMS IS PLEASED TO QUOTE THE FOLLOWING GABION MATERIAL FOR THE ABOVE REFERENCED PROJECT:

QTY	LETTER CODE	GABION SIZE	WIRE GA			TYPE		PRICING		
			11	12	14	PVC	GALV	PREASSEMBLED	UNASSEMBLED	ROLL STOCK
38,375	U	4X2X.23			X	X		\$81.86 <i>10.23 sp</i>	\$77.36 <i>9.67 sp</i>	<i>9.03 sp</i>
		ROLL STOCK								
5770	ROLLS	1.5X3X78"X150'			X	X				\$332.34
13,719	ROLLS	1.5X3X9"X200'			X	X				\$37.12
1,496,625	SPIRALS			X		X				\$0.20
76,750	LBS	LACING WIRE								\$0.60
<b>TOTAL</b>								<b>\$3,141,377.50</b>	<b>\$2,968,690.00</b>	<b>\$2,772,226.08</b>

NOTES:

QUOTED PRICES INCLUDE ALL NECESSARY SPIRALS AND LACING WIRE . THE PRICES ARE FIRM FOR 30 DAYS FROM THE QUOTE DATE.

*307,000*

ESTIMATED FRT CHARGES	
FOB:	HOUSTON

PREPARED BY: COLIN FRAZIER

SIGNATURE:

MATERIALS THAT ARE TO BE RETURNED, MUST BE IN SALABLE CONDITION AND ACCOMPANIED WITH AN AUTHORIZATION TO RETURN NUMBER. THE CUSTOMER IS RESPONSIBLE FOR THE RETURN FREIGHT AND WILL PAY A 25% RESTOCKING FEE.