



**etap<sup>®</sup> Demo**

*Convergence of Power & Intelligence*

# Install Guide



# etap<sup>®</sup> Demo Install Guide

This document provides a step-by-step installation procedure for ETAP Demo. The installation program installs ETAP and all of its components including libraries, example projects, and ETAP help files.

## Installation Code

The ETAP Demo will prompt you for a 4-letter Installation Code sent via email when signing up on our website or located on the ETAP Demo CD sleeve. If you cannot locate your code, please contact your sales representative at sales@etap.com.

## Before Installing ETAP

1. You must have administrator rights to your computer
2. Close all other applications.  
Note: ETAP installation will automatically include Engineering Device Library (.lib) and Main Program Executable (etaps64.exe) into Windows Defender Exclusion List. This is to prevent Windows Defender from scanning the engineering library when linked to a project file.

## Installation:

- Register and download from ETAP website or insert ETAP Demo DVD
- Run ETAPINSTALLER.exe

## Software Prerequisites

ETAP automatically installs prerequisites as needed. For a complete list of prerequisites, refer to the System Requirements section of this installation guide.

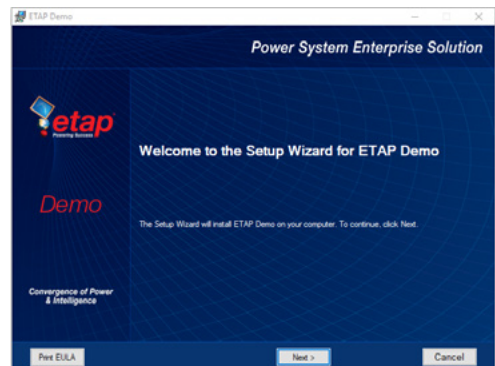
## 1. ETAP Installation Manager



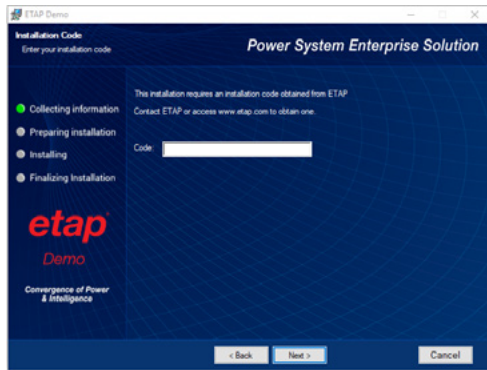
## 2. License Agreement



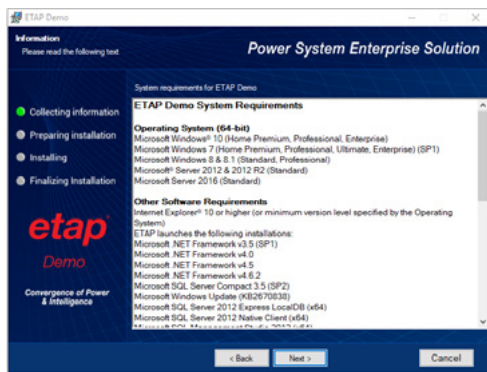
## 3. Welcome



#### 4. Installation Code



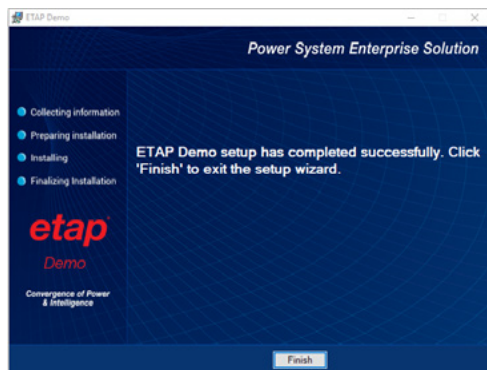
#### 5. System Requirements



#### 6. Installation Path Selection



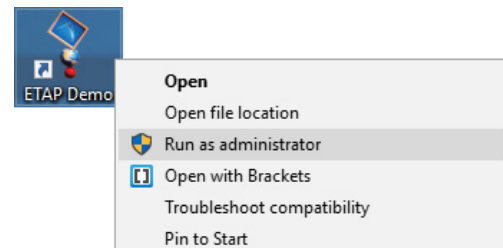
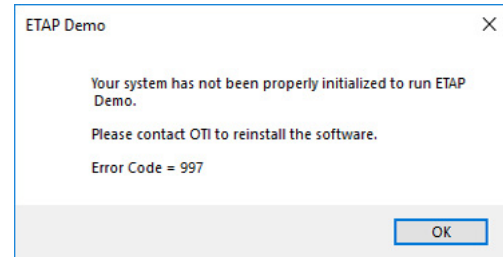
#### 7. Installation Complete



#### Start Demo

After restarting your computer, double-click on the ETAP Demo icon created on your desktop during the installation.

If you receive error code 997 close the demo and re-run as an administrator.



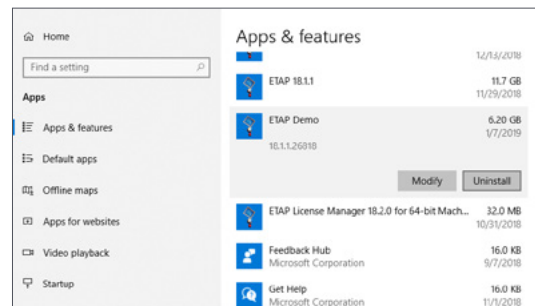
#### Activation Code for additional modules

Once installed, the demo offers immediate access to analysis modules including Load Flow and Short Circuit.

To activate and explore other analysis modules, simply email your Return Code to ETAP to receive an Activation Code. You must have administrative rights to your computer to enter the Activation Code.

#### Uninstall Demo

To remove the demo from your computer, use Add or Remove Programs from the Control Panel.



#### Add or Remove Programs

## System Requirements

### Operating System (64-bit)

- Microsoft Windows® 10 (Home Premium, Professional, Enterprise)
- Microsoft Windows 8 & 8.1 (Standard, Professional)
- Microsoft Windows 7 (SP1) (Home Premium, Professional, Ultimate, Enterprise)
- Microsoft® Server 2016 (Standard)
- Microsoft Server 2012 & 2012 R2 (Standard)

### Software Prerequisites

Internet Explorer® 10 or higher (or minimum version level specified by the Operating System)

ETAP launches the following installations:

- Microsoft .NET Framework v3.5 (SP1)
- Microsoft .NET Framework v4.0
- Microsoft .NET Framework v4.5
- Microsoft .NET Framework v4.6.2
- Microsoft SQL Server Compact 3.5 (SP2)
- Microsoft Windows Update (KB2670838)
- Microsoft SQL Server 2012 Express LocalDB (x64)
- Microsoft SQL Server 2012 Native Client (x64)
- Microsoft SQL Management Studio 2012 (x64)

### Other Third Party Software

- Microsoft SQL Management Studio 2012 (x64)
- Mongo DB
- DB Browser for SQL Lite
- Python 3.5

### PC Configuration Requirements

- 64-bit hardware
- USB port for security key
- Ethernet port w/ network access (if network licensing required)
- DVD Drive, 10 to 80 GB hard disk space (based on project size, number of buses)
- Recommended Display
  - 19" monitors or higher
  - Dual monitors (highly recommended)
  - Resolution - 1920 x 1080
  - Font scaling - 100% - 125%

### Recommended Hardware

- Intel Core i5 or better – 2.4 GHz or better
- 8 GB of RAM

## User Feedback

ETAP is dedicated to providing our customers with a superior product experience, and User Feedback is one of the central elements of this commitment. In fact, ETAP is designed from 95% user suggestions and requests! We invite you to help us make a difference by filling out a short, single-page feedback form. All information is confidential and will be used only by the ETAP Engineering and Development staff.

## ETAP Training

ETAP University [etap.com/etap-university](http://etap.com/etap-university) training events include a wide-range of power system analysis workshops, seminars, and on-site training, conducted by Certified ETAP Instructors. ETAP workshops in the U.S. offer Continuing Education Units (CEUs) and a 10% discount for IEEE members.

Visit [etap.com/events-schedule](http://etap.com/events-schedule) to view the Current Events schedule. ETAP offers over 100 workshops, technical seminars & User Group meeting around the world.

## Can't find the training you need?

Visit ETAP University page at [etap.com](http://etap.com) to inquire about future training opportunities or private workshops.

Many online tutorials and case studies are available on our Resources Page [etap.com/resources](http://etap.com/resources).

[etap.com/whats-new](http://etap.com/whats-new)

Main: 949.900.1000  
Support: 949.462.0400  
[support.etap.com](http://support.etap.com)

Registered to ISO 9001:2015



Certification No. 10002889 QM15