

THE TRAIL MEDIC

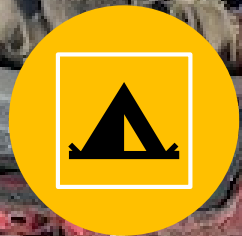
Emergency Response Camp Workshop

DEATH VALLEY 03.08-9.2019
EMERGENCY ACTION PLAN
MAYER





**DUMONT
DUNES**



**BARKER
RANCH**



**ALABAMA
HILLS**

COMMS PLAN

HAM RADIO FREQ.

CB RADIO CHANNEL

DV NATIONAL PARK,
RIDGECREST FIELD
OFFICE

760-384-5400

SAN BERNARDINO
SHERIFF'S DEPARTMENT
(NORTH) DISPATCH

760-956-5001

INYO SHERIFF'S
DEPARTMENT DISPATCH

760-878-0383 (FIRST!!!)

760-876-5606 (OFFICE)

EVACUATION HEIRARCHY

- ▶ MAIN CONTACT: NICOLE MAYER, 626-536-7373
- ▶ MAINTAIN AWARENESS OF LOCATION AT ALL TIMES
- ▶ MAINTAIN AWARENESS OF WEATHER CONDITIONS
- ▶ SAR/HELO MISSION TO THE NEAREST HOSPITAL VS. GROUP GROUND EVACUATION OUT MAY BE THE BEST BET
 - ▶ I WILL MAKE THAT DECISION IN THE PARTICIPANT'S BEST INTEREST AND/OR IN COORDINATION WITH LOCAL SAR REPRESENTATIVES
- ▶ SAR HELICOPTER WILL TYPICALLY BE THE SAFEST/FASTEST ROUTE OF EVACUATION IN THE MOST REMOTE AREAS



CAMP #1

DUMONT
DUNES

35.68630

-116.23482

GROUND TRANSPORTATION EVACUATION ROUTE

CAMP #1 - CAMP #2



- ▶ DUMONT DUNES TO BARKER RANCH
- ▶ **SAN BERNARDINO SHERIFF'S DEPARTMENT**
- ▶ **NORTH DISPATCH**
- ▶ **760-956-5001**

- ▶ **DESERT VIEW HOSPITAL**
- ▶ **NOT A TRAUMA CENTER**
- ▶ 775-751-7500
- ▶ **NORTHEAST DIRECTION**

GROUND TRANSPORTATION EVACUATION ROUTE

CAMP #1 - CAMP #2



- ▶ DUMONT DUNES TO BARKER RANCH
- ▶ DEPENDING ON LOCATION OF INCIDENT, BOTH SAN BERNARDINO AND INYO COUNTY SHERIFF'S MAY BE IN JURISDICTION
- ▶ DEPENDING ON LOCATION AND INCIDENT, EITHER RIDGECREST (SOUTH EAST OF) OR DESERT VIEW (WEST OF) HOSPITALS MAY BE UTILIZED



CAMP #2

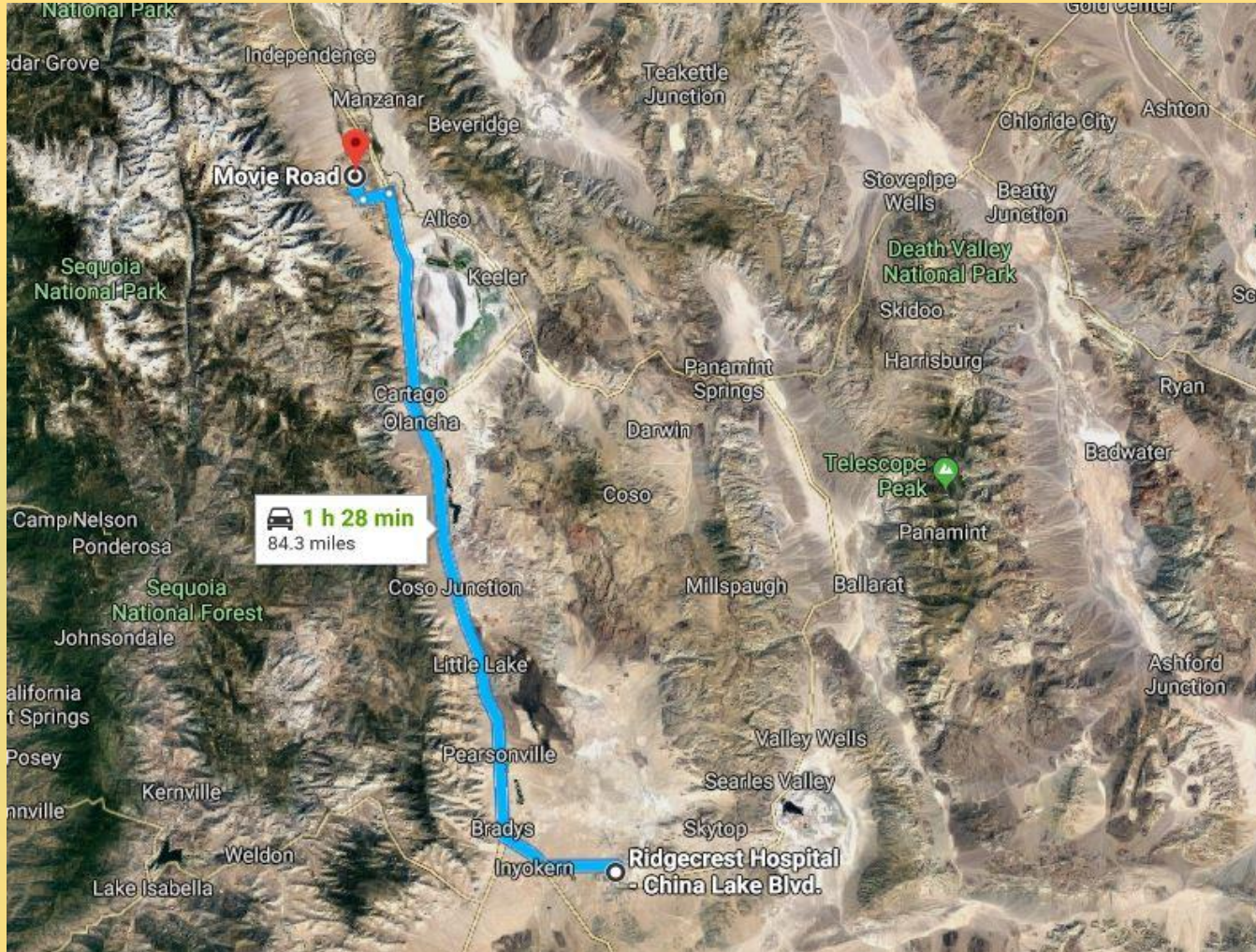
BARKER
RANCH

35.85932

-117.08875

GROUND TRANSPORTATION EVACUATION ROUTE

CAMP #2 - CAMP #3



- ▶ BARKER RANCH TO ALABAMA HILLS
- ▶ RIDGECREST FIELD OFFICE
- ▶ 760-384-5400
- ▶ **RIDGECREST REGIONAL HOSPITAL**
- ▶ 1081 N. CHINA LAKE BLVD, RIDGECREST, CA 93555
- ▶ **760-446-3551**
- ▶ SOUTHEAST DIRECTION



CAMP #3

ALABAMA
HILLS

36.63078

-118.12179

GROUND TRANSPORTATION EVACUATION ROUTE

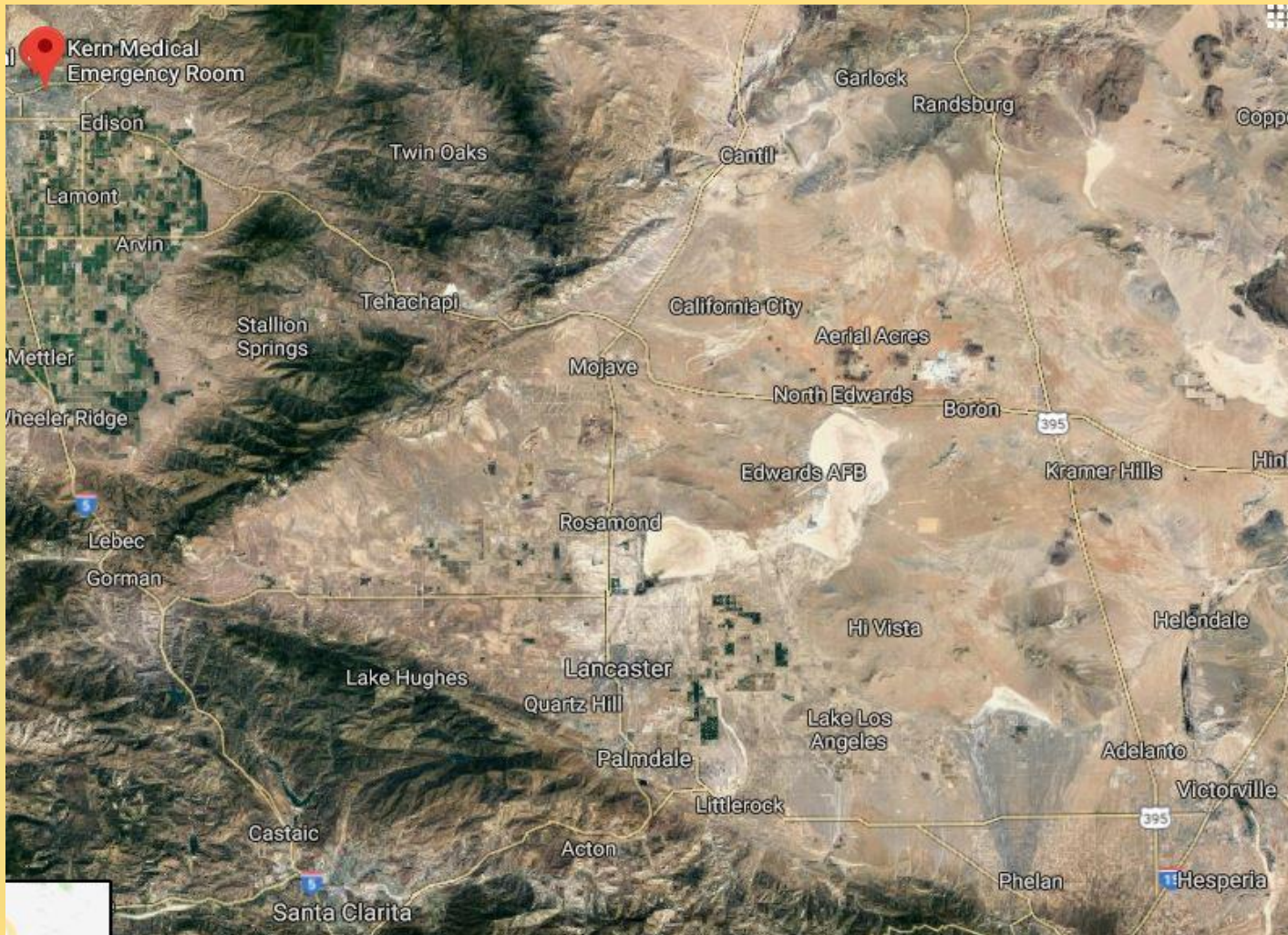
CAMP #3 TO NEAREST SERVICES



- ▶ **MOBIL GAS STATION**
- ▶ LONE PINE
- ▶ 24 HOURS
- ▶ **760-264-9687**

CLOSEST TRAUMA CENTERS

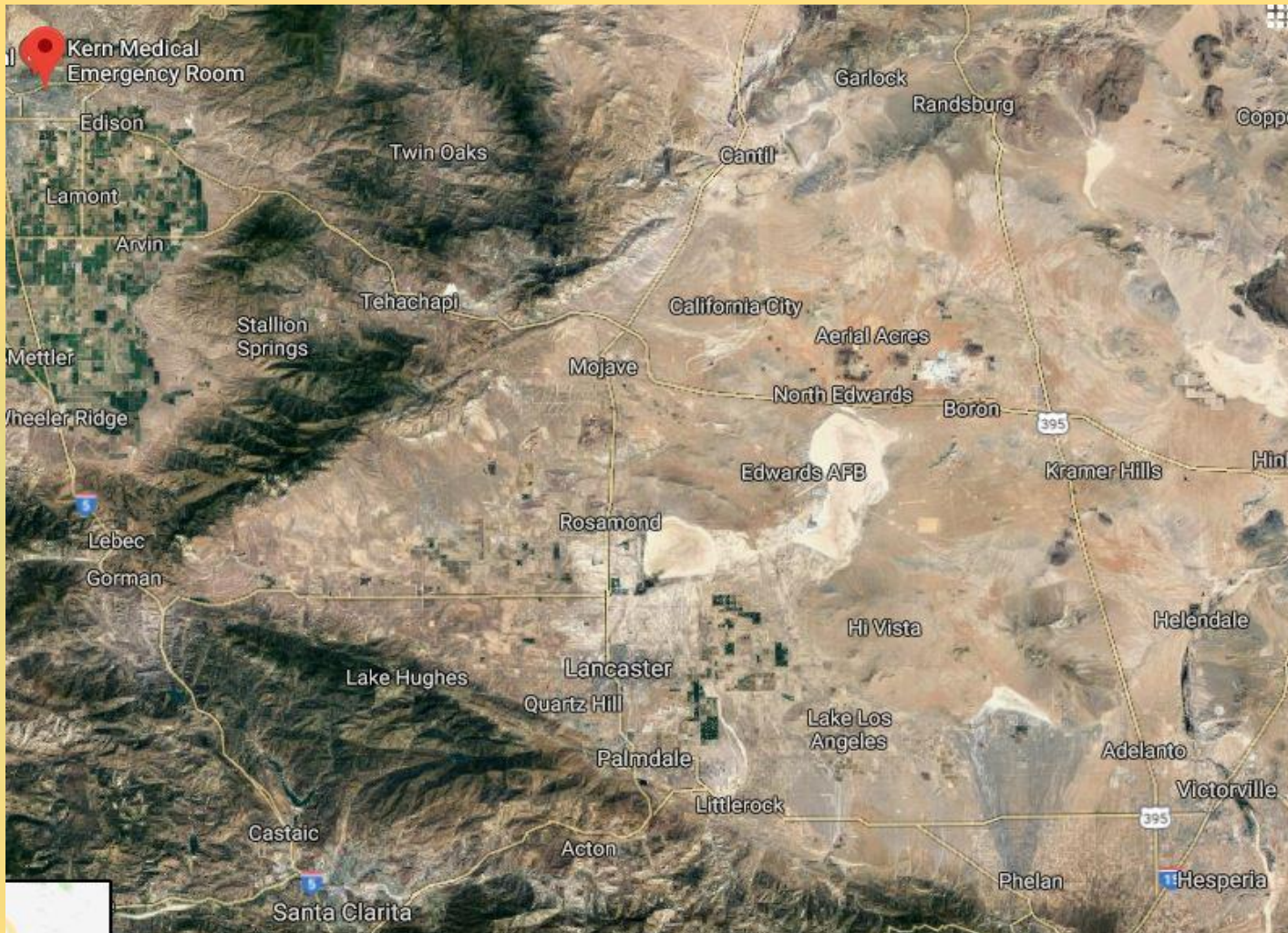
KERN MEDICAL



- ▶ **661-326-2000**
- ▶ 1700 Mt. VERNON AVE,
BAKERSFIELD, CA 93306
- ▶ 35.3829342,-118.9704132

CLOSEST TRAUMA CENTERS

ANTELOPE VALLEY TRAUMA CENTER



- ▶ **661-949-5000**
- ▶ 1600 WEST AVENUE J,
LANCASTER, CA 93534
- ▶ 34.6879529,-118.1582782

In service

THE TRAIL MEDIC

