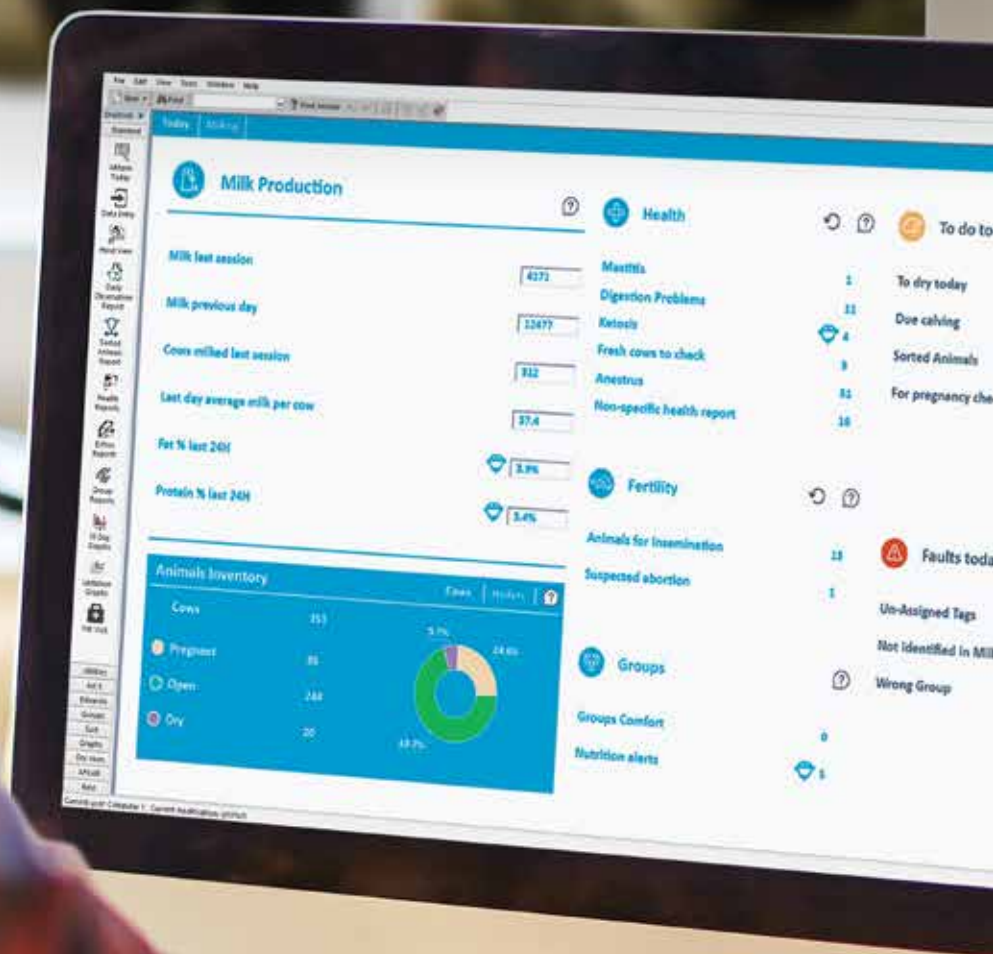


# Afimilk Introduces AfiFarm™ 5.2

2017/18



**afimilk**<sup>®</sup>  
Vital know-how in every drop

# Index

3-4

Afifarm 5.2 - Intro



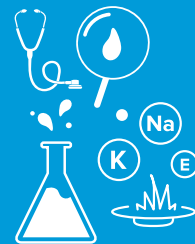
5

AfiFarm ABC Dashboard



6

New AfiLab Applications and More



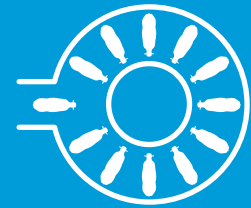
7-8

Mobile Applications



9-10

## Rotary Terminal



11-13

## New in AfiAct II



14-16

## AfiAct II Calving Alert Service



17-18

## More Features in AfiFarm 5.2



## To Manage your Vital Knowhow

AfiFarm, the most comprehensive, scalable, and flexible software for the automation and management of dairy farms – now with a whole set of new capabilities, and a more friendly, accessible, and intuitive UI. AfiFarm 5.2 is clearly the best AfiFarm yet.

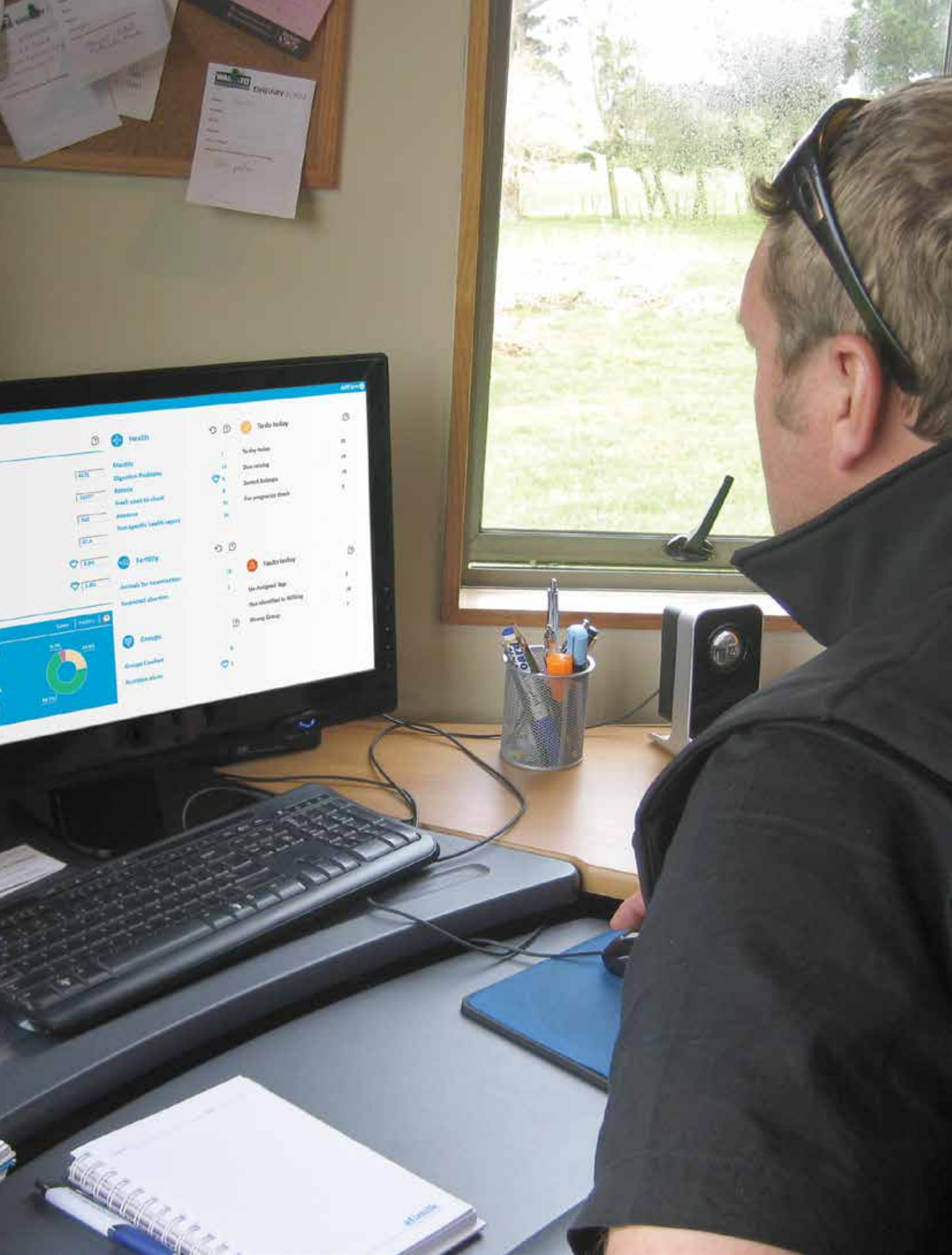


### Features and Benefits

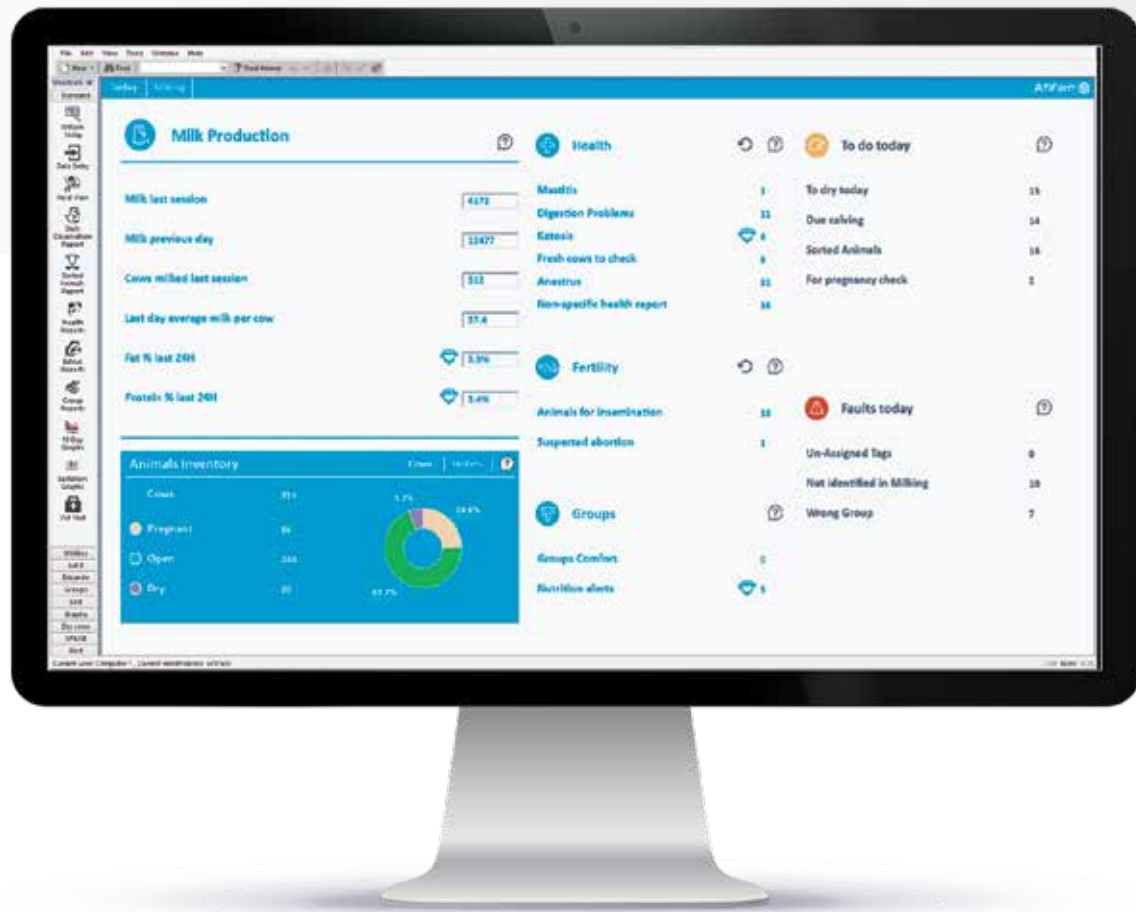
- Comprehensive health management
- Detection of ketosis, mastitis, and digestion problems
- Group wellbeing – automatic alerts on over-crowding, bedding problems, and reduced wellbeing
- Point-on heat detection and fertility management
- Monitoring and analysis of milk production
- Milking efficiency analysis
- Advanced animal sorting
- Monitoring the quality of milking parlor CIP

### New in AfiFarm 5.2

- AfiFarm ABC dashboard and new reports
- Reliable Calving Alert Service
- New In-line Milk Lab applications
- Two new mobile applications
- Mobile notifications for calving and heat detection
- Rotary terminal with touchscreen
- The best integration with DC305 on the market



# Serious management just got easier!



## Meet AfiFarm ABC, your new farm dashboard

- Improved usability, always-on homepage
- All key management functions at your fingertips
- Always updated - reports will open in a snap, even in the largest mega-farms

## What's in it?

- Current status – inventory and production
- Attention lists - powerful system reports from Afimilk's experts
- Action lists – tasks to perform, problems to solve

# AfiLab and AfiAct-II enabled artificial intelligence: **NEW** health, fertility and nutrition monitoring

Category	Report	Count
Health	Mastitis	1
	Digestion Problems	11
	Ketosis	4
	Fresh cows to check	9
	Anestrus	31
Non-specific health report	16	
Fertility	Animals for insemination	13
	Suspected abortion	1
Groups	Groups Comfort	0
	Nutrition alerts	5

**INTELLIGENT HEALTH DETECTION & GROUP ALERTING**

**BETTER FERTILITY MANAGEMENT**

**In line milk lab** | **ENHANCED APPLICATION**  
Extra dimension to feed & health

## Powerful set of new system reports developed by Afimilk experts

- Research team of mathematics and physics PhDs, cow-specialized veterinarians and leading epidemiologists
- Decision support – specific indications for diseases & conditions
- Unmatched multi-sensor analysis: milk yield, conductivity, milk components, activity and rest

### Specific reports

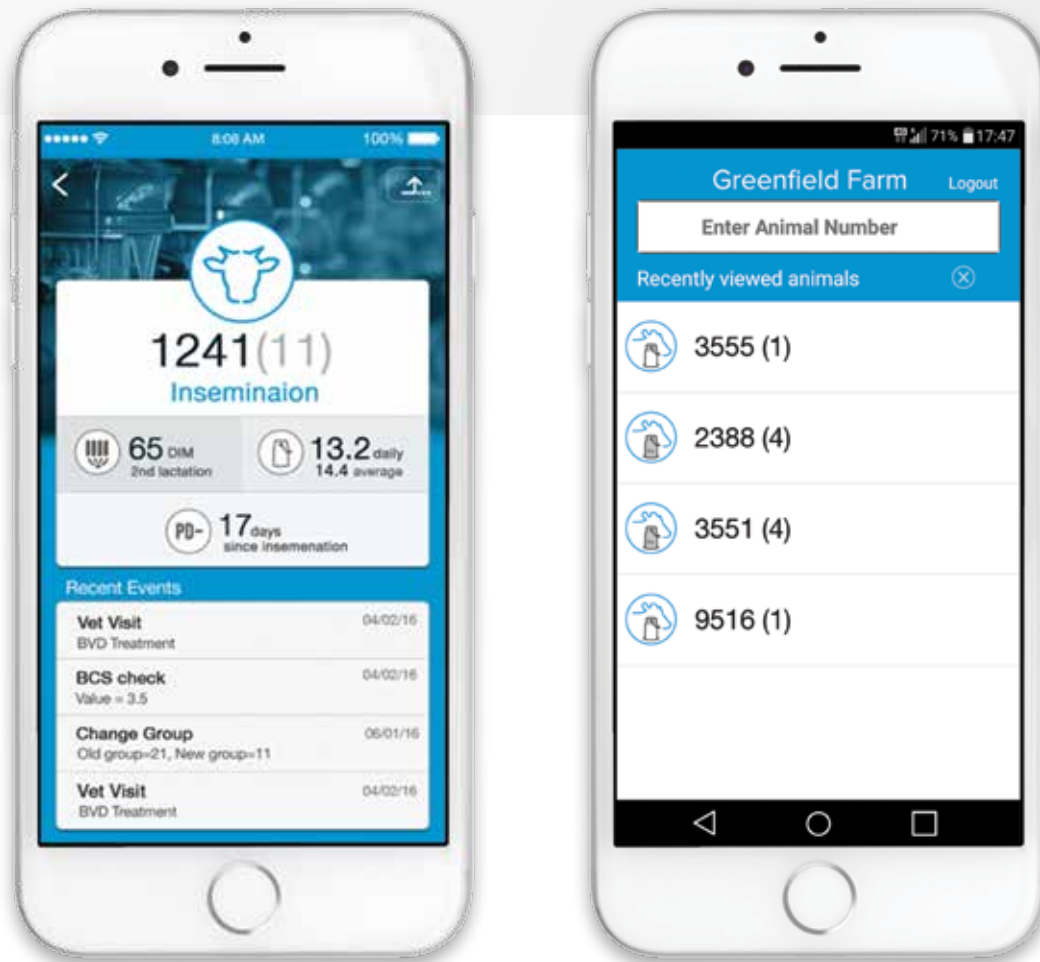
- Suspected mastitis cows
- Suspected ketosis cows – AfiLab based detection, and risk factors (by AfiFarm)
- Fresh cows to check
- Anestrus cows
- Nutrition alerts (including SARA – Sub-Acute Ruminal Acidosis)
- Suspected abortions

## Who's that Cow? Cow Info Mobile App\*

A new application for managers and employees – gets you the essential animal information to your smartphone whenever you need it.

Either type the cow's herd number or scan the animal's RFID ear tag with an RFID wand\*.

\* Requires standard RFID wand, supporting Bluetooth (not sold by Afimilk).



### Features and Benefits

- Access key information such as group, days in milk, pregnancy status, and average production per animal status (Heifer, Milking Cow, Dry Cow)
- Data on recent events, for example, group change, vet visit, heat, and insemination
- Sort milk cows in one click
- Find Cow ID by typing, smart search, or automated using an RFID wand

### Requires

- AfiFarm 5.2
- An Internet connection and a smartphone (iOS or Android of supported version)



## Stay Alert! Farm Notifications Mobile App

A new application that provides a user-friendly visual inbox for timely notifications on important farm events, for example "animal 4385 – prolonged calving", "your daily list of animals for insemination: 3321, 7423, 5552", or even "technical problem at the sort gate requires your attention".

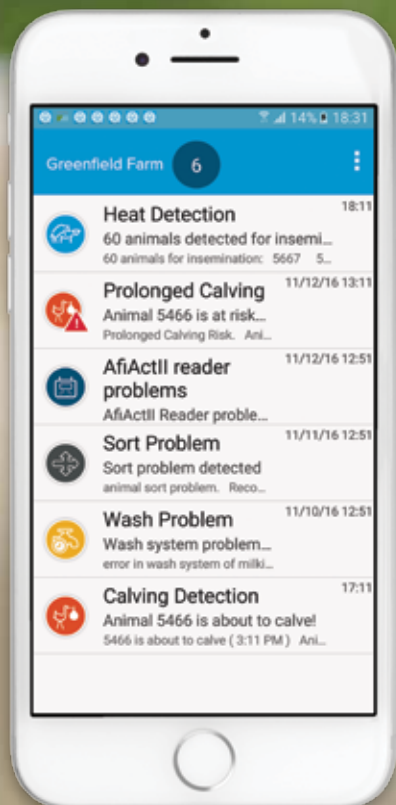
You can decide which employee (or even a vet or consultant) gets access. Each of the users can select the notification type that suits them, so that you don't bother the vet with technical alerts or send a calving alert to the inseminator.

### Features and Benefits

- Unlimited number of users
- Enables the manager to control who gets access
- Each user can configure the notification type/s of interest (insemination, calving, and system faults)

### Requires

- AfiFarm 5.2
- An Internet connection and a smartphone



# AfiFarm™ 5.2 Rotary Terminal – The Control Center of Your Rotary Parlor

**Everything You Need to Know** – At a Glance

**Anything You Need to Do** – With a Touch





**No need to walk around the deck – you can now see everything from your milker's place!**

Intuitive touchscreen-based control pod to help you stay on top of everything that happens in your rotary parlor through:

**Statuses:** milking session progress, groups milked and groups on the deck, production data, milking progress on the deck

**Alerts:** cow in wrong group, conductivity (possible mastitis), cluster kick, low yield, canceled ACR, manager codes

**Actions:** point and send to sort, keep for 2nd rotation

### More Features and Benefits

- Pre-installed cabinet with ruggedized PC and built-in 15" touchscreen
- High spec and water proof
- HDMI and USB connectors for external screen or touchscreen (useful for large wall-mount monitors)

# AfiAct II - Vital Knowhow in Every Step



**AfiAct II** and **AfiFarm 5.2**  
Match Made in Heaven

## Effective Cow Monitoring and Accurate Animal ID in a Single Package

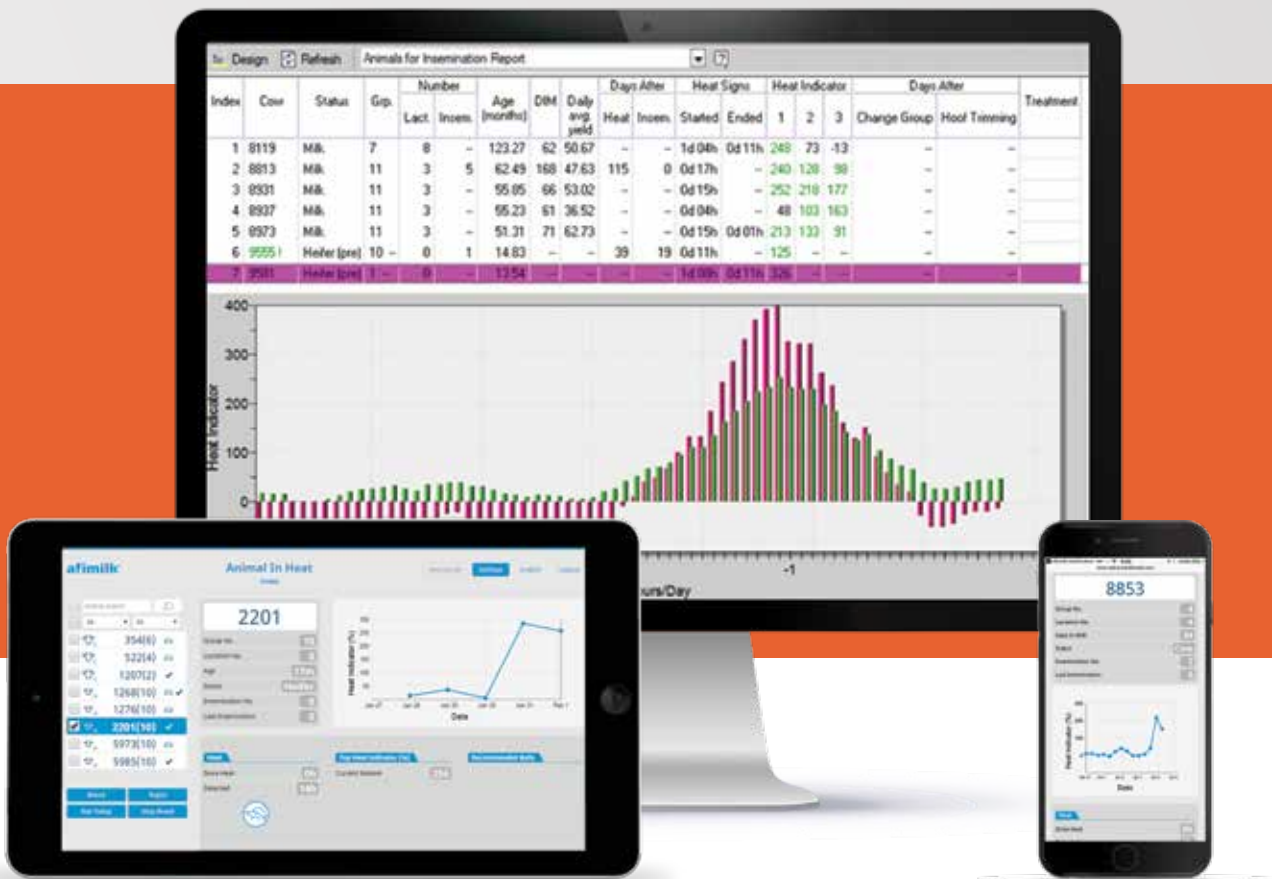
### AfiAct II Solution:

AfiAct II solution helps you improve your pregnancy rate with accurate and time-sensitive heat detection that helps to identify **which** cows should be inseminated and **when**.

The same tag, also functions as a powerful tool for accurate identification of the cow in the milking parlor to properly record their production data to right animals.

AfiAct II solution includes:

- AfiTag II leg tags - one of the all-time best selling dairy precision products
- AfiAct II reader - enabling remote reading and 24/7 monitoring
- AfiAct II software for standalone cow monitoring, or AfiFarm software for full fledged solution (cow monitoring and parlor automation)



## Features and Benefits

- Offers highly-accurate heat detection
- Best solution for Animal ID in the parlor - minimizes wrong cow identification
- Monitors rest behavior
- Group wellbeing alerts on overcrowding and bedding problems , as well as general group comfort
- 24/7 detection and long-range transmission
- As reliable as it gets – enjoy our experience with millions of animals
- Long-life batteries

# Enhanced Cow Monitoring with **AfiAct II**



## **AfiAct II and AfiFarm 5.2** Match Made in Heaven

### **Smarter, better fertility management**

- Automated filters can save manual labor, especially in large farms
- Combines the power of strong management software with accurate heat detection

### **Adaptation to work protocols**

- Filter out animals following group changes, pregnancy checks, and hoof-trimming to avoid false alerts – by manager's choice
- Flexibly adapt to versatile work protocols e.g. single breeding versus standard operation, and use new "After heat" report for specific purposes

### **Group level wellbeing monitoring**

- Welfare index for each group
- Overcrowding alert
- Quality of Bedding alert
- Group change alert (too many group changes causing rest reduction)
- General group restlessness alert



**NEW**

## Calving Alert Service

The determination of calving time is a key factor in ensuring successful calving and optimized treatment — and is often even the determining factor in saving the lives of your calves and cows.

With the AfiAct II calving alert service, you can receive notifications directly to your smartphone just before calving starts, and more importantly, in cases of prolonged calving that often require intervention.

The AfiAct II Calving Alert Service was successfully proven at large scale, used in hundreds of farms in tens of countries to help farmers save their calves and cows every day.

### Features and Benefits

- Full integration with Afimilk's Farm Notification Mobile app
- Alerts when calving starts (typically 4 hours or less before calving starts)
- Alerts in cases of prolonged calving , for effective intervention in distochia (difficult calving) cases
- Indication of high-risk calving (such as cows after induction)

### Requirements

- AfiAct II leg tags (manufactured after January 2016) and a reader for the dry cows, an Internet connection and a smartphone



Vital Knowhow in Every Step

Best Leg Tag Solution for Cow Monitoring and Animal ID

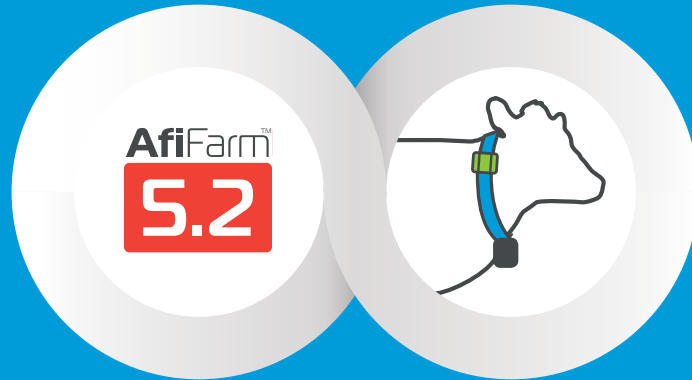






Animal 5466,  
Prolonged Calving

# More features in **AfiFarm**<sup>TM</sup> **5.2**



## AfiFarm and Silent Herdsman Integration

- **Inventory:** the animal inventory is automatically sent to Silent Herdsman Software so when a new animal is entered into AfiFarm or a cow exits the herd (in AfiFarm), there is no need to update this manually in Silent Herdsman
- **Events:** when updating an event such as “Inseminated”, “PD+”, “Abortion”, or a diagnosis in AfiFarm, it is sent automatically to the Silent Herdsman Software and displayed in the relevant graphs
- **Sort:** monitor in Silent Herdsman and sort by AfiFarm — you can now use Silent Herdsman with Afimilk collars to detect cow or heifers in heat, or rumination indicating health problem that requires attention while you manage and sort them with AfiFarm

Better Support  
For Existing  
Afimilk Customers



## AfiFarm and DC305 – Two Leading Software Programs, Now With Better Integration

- VAS and Afimilk announced the enhanced software integration of DC305 and AfiFarm at the World Ag Expo, Tulare 2017
- The new communication protocol gives you more information & better synchronization
- Includes a fully-synched Animal for Insemination list
- Afimilk's Ketosis list (powered by AfiLab) is now available in DC305
- DC305 events are synched to AfiFarm (Confirm Open, Hoof trim, Mastitis, Metritis, and more)

- AfiFarm 5.2 now supports the full product lines of:
  - Afimilk MPC milk meters (all versions)
  - AfiLite Milk Meters (all versions from 19.33 and above)
  - AfiFlo Milk Meters (all versions)
  - AfiLab Sensors

# Highlights



User friendly



In  line  
milk lab

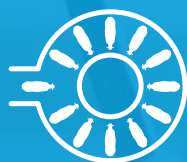
Unique applications



Decision support tools



Enhanced cow monitoring



Best large farm tools



Animal wellbeing