



Sleep Apnea Devices



Your Trusted US Manufacturer
of Anti-Snoring & Sleep Apnea Devices

Phone: **800.489.4020** | Web: www.dynaflex.com

Dental Sleep Medicine

Digital Sleep Package

Included With Every Device!



FREE High Quality Patient Delivery Box



FREE Storage Case

FREE High Resolution 3D Printed Models



FREE AM Aligner For Morning Wear



Doctor and Patient Instructions

FREE Digital Storage Patients models and bite registration

Award Winning Customer Service

Made In America

Full Product Liability Insurance

Competitive Pricing



Engineered For Excellence

CAD/CAM Milled Devices

3 Year Warranty



DynaFlex® Dorsal



Adjustable Herbst

The Clear Choice

With our high precision 5 Axis milling machines, we can create an extremely accurate, crystal clear and impressively strong device. We utilize the newest CAD/CAM digital software and highly trained technicians to ensure an accurate fit and silky smooth finish to your milled devices. The new milled line of OSA devices are currently available in the Adjustable Herbst and DynaFlex Dorsal and includes a **3 Year Warranty**.

- **Superior Durability**
- **Impeccable Fit**
- **Diamond Luster Finish**
- **Clasp Free Design**



"The combination of digital scans and the DynaFlex milled sleep device means less chair time, more efficacy and more patients successfully treated."

Dr. Richard B. Drake of Dental Sleep Solutions

DynaFlex® Dorsal

Available in 3 Different Materials



DynaFlex® Dorsal Acrylic

The DynaFlex Dorsal® Device has evolved into one of the most popular choices for snoring and obstructive sleep apnea. The two piece construction allows for maximum patient comfort. The Dorsal fins on the mandibular appliance interface with inclines built into the facial of the upper appliance to dictate a specific mandibular position. The device is fabricated with adjustable screws in the maxillary appliance to allow for further mandibular advancement.

"DynaFlex® has quickly become my go to lab. I am very pleased with both their service and the quality of their lab work. Their turnaround time and customer service are excellent, and their fees are very competitive."

Dr. Robert A. Levy, D.M.D., Diplomate, ABDSM

DynaFlex® Dorsal Comfort-Fit

The DynaFlex Dorsal is constructed from our "comfort fit" material. The soft inner lining provides superior night time retention. The outer durable acrylic covering is designed for long lasting wear. The great news . . . the comfort fit design can be requested at no additional charge.

"It is a pleasure to have oral appliances made that fit well and require few adjustments"

Dr. Larry Z. Lockerman, D.D.S., Diplomate, ABDSM
UMass Memorial Medical Center



DynaFlex® Dorsal Accu-Fit® Custom Thermal Acrylic

Fits first time, every time! The Accu-Fit® design is the newest device added to the Dorsal family of sleep appliances for treating patients with sleep apnea. The unique custom thermal acrylic liner allows the appliance to fit at the first delivery appointment without acrylic or wire adjustments. The Accu-Fit® design is ideal for patients who will require future dental work (restorations, crowns or bridges). The thermal acrylic liner is remolded in hot water (160 degrees) to fit the patient's arch after dental restorations.

The Dorsal ACCU-FIT device is patented by DynaFlex by Patent 10,085,877.

"From personal experience, the ability to re-adapt the Accu-Fit to restorative changes sets it apart from similar sleep appliances."

Dr. Neil Zane, D.D.S.
New York Center for Neuromuscular Dentistry





DynaFlex Adjustable Herbst® Appliance *Available in 3 Materials: Acyclic, Comfort-Fit, Accu-Fit*

The Adjustable Herbst® is a two piece construction joined with two inseparable hinged mechanisms on the facial of the upper and lower appliances. The hinged mechanisms are designed with advancement screws to allow for titration and advancement of the mandible. The Adjustable Herbst® is designed for incremental advancement of the mandible to the desired position. The advancement screws have a 5mm range with an adjustment ratio of 16:1 or 16 quarter turns to one millimeter.

The Herbst ACCU-FIT device is patent pending by DynaFlex.
Herbst is a registered trademark of Dentaurum GMBH & Co. KG.

Medicare E0486 Verified Device

dreamTAP®, TAP® 1, TAP® 3 *Thornton Adjustable Positioner*

The two piece Tap® devices are fully adjustable on a horizontal plane, providing dentists the ability to locate the ideal mandibular position for their patient. This custom appliance is fabricated with separate upper and lower trays. The component utilizes an adjustable screw and hook which interfaces with a socket or bar to hold the mandible in the desired position.

TAP is a registered trademark of Airway Management, Inc.



Medicare E0486 Verified Devices



EMA®

The Elastic Mandibular Advancement (EMA) appliance is the smallest of our obstruction sleep apnea appliances. The individual trays are constructed of 2mm vacuum form material and are joined with straps of varying lengths and flexibility. These straps provide unsurpassed lateral movement and comfort as well as dictating the amount of mandibular advancement. These straps are positioned between the teeth and cheek leaving the palate free from obstruction.

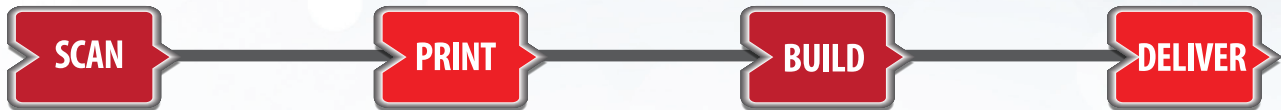
EMA is a registered trademark of Frantz Design Inc.

"DynaFlex® has been very helpful in meeting our specific needs. As a full time oral appliance practice, having a single source for our most frequently used appliance designs is a real bonus."

Dr. John M. McCrillis, D.D.S., Diplomat, ABDSM
Louisville Dental Sleep Medicine

Digital Sleep Technology *Simpler Than Ever . . .*

Whether your sleep practice is already digital or you're just looking into the process, DynaFlex® can help you **make the most** of your digital technology. We make the entire process **easy** and **accurate**, from the first intraoral scan to the final case delivery.



We Accept Scans From Any Scanner

Step 1

Patient is scanned with intra-oral scanner. Digital record & Rx are uploaded to DynaFlex® Portal.



DynaFlex® supports files from all major scanners.

Step 2

DynaFlex® prints CyberBite registration and acrylic models to fabricate the sleep device.

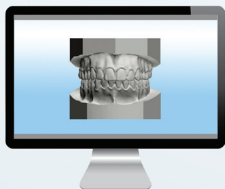


Step 3

Fabricated Sleep device is shipped directly to your office.



Before submitting your first scan, please contact DynaFlex® for initial setup instructions. Setup time only takes minutes, it's quick and easy.



Digitally



PVS Impressions



Working Models

3 Ways To Send Your Sleep Case

DynaFlex® Can Accept:

- Digital Files
- Working Models
- PVS Impressions

To avoid damage of working models, please wrap each model individually. For proper identification, please print patient's and doctor's name on each model.