



“WITH A BROAD UNDERSTANDING OF THE NEW PUBLIC RELATIONS LANDSCAPE, THE LEDE COMPANY FULLY GRASPS TODAY’S CULTURE.”



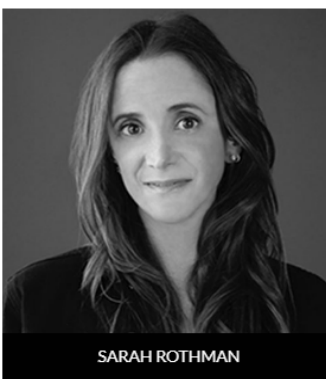


The Lede Company is a full-service public relations firm, specializing in entertainment. With dedicated Talent, Strategic Communications and Brand divisions, we work to deliver brand strategy and measurable media results for a wide variety of clients. Our business centers on our expertise, relationships, and resources, all of which enable us to not just meet client expectations but exceed them. With a broad understanding of the new public relations landscape, The Lede Company utilizes its deep media and talent relationships in order to fully grasp TODAY'S CULTURE, and ultimately generate results.

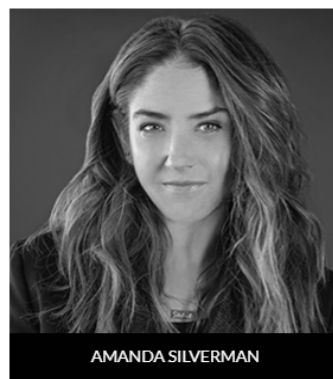
LEADERSHIP



MEREDITH O'SULLIVAN WASSON



SARAH ROTHMAN



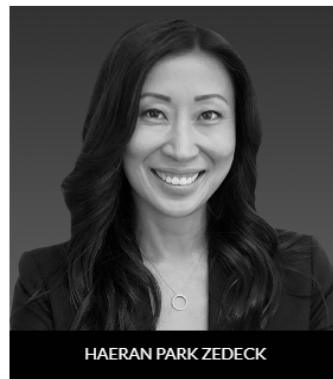
AMANDA SILVERMAN



CHRISTINE SU



DVORA ENGLEFIELD



HAERAN PARK ZEDECK

LEDE

THE LEDE COMPANY



